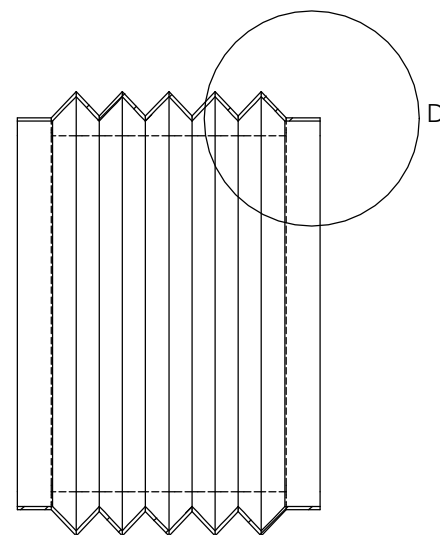
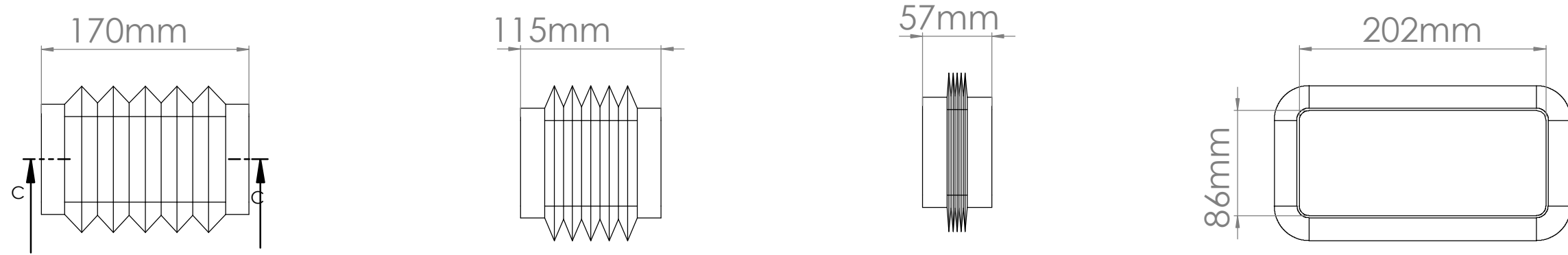


The all new 220mm x 90mm flat ducting rubber boot was designed to help in those awkward situations when a standard 90° or 45° isn't feasible in creating the angle to get around pipes or cables in the ceiling space to run your ducting, now you can create any angle between 30° and 90° with ease with this easy fit rubber boot.

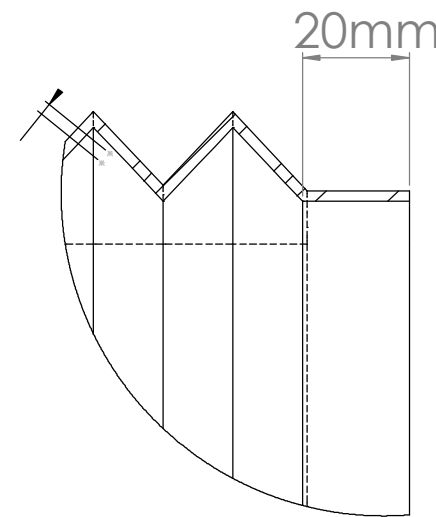
When coming off the slimline motor housing this boot also gives you the flexibility of 10mm adjustment left or right and is ideal for those tight fit situations when installing ducting.

You can install as many of these along the 220mm flat ducting tube as you like and are far better in giving secure vibration free connections to the tube than conventional flexible plastic hose connectors that can vibrate in the ceiling void.

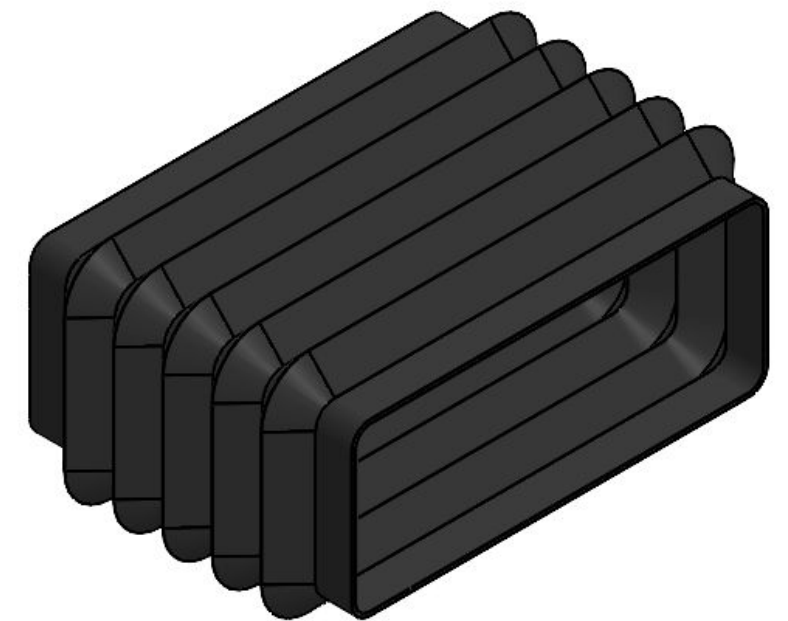
Although the rubber boot is a tight fit female connection, it is advised to use ducting tape to ensure a secure trouble-free joint.

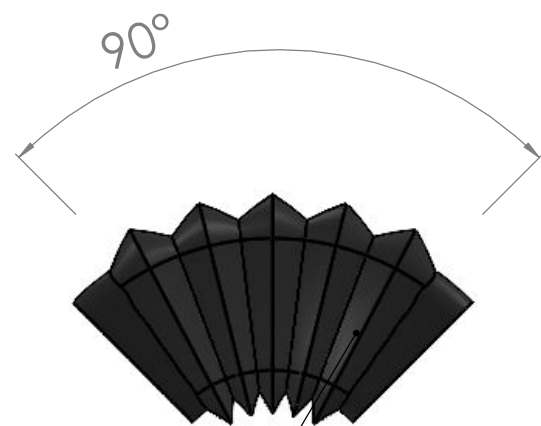
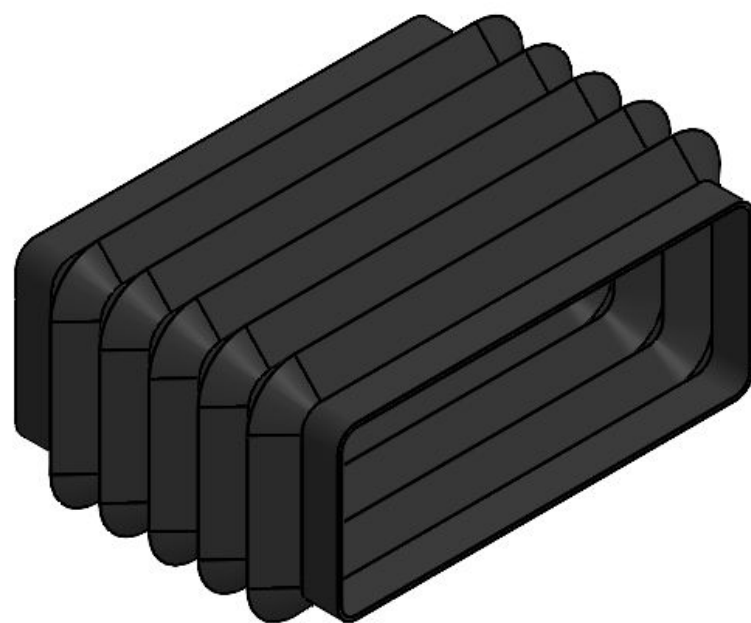


SECTION C-C
SCALE 1 : 3

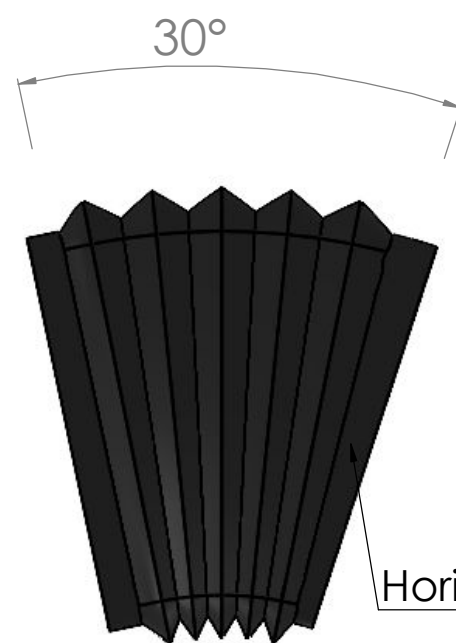


DETAIL D





Vertical Bend 90°



Horizontal Bend 30°

Adjustable Left & Right

